

TECHNICAL DATA SHEET



KRASO® Sealing Insert Type TD-X

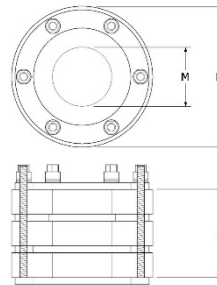
Application Area

against pressing and non-pressing water, for core holes or casings for installation of pipes or cables, including KRASO® Torque Control Nut.

Product images



Technical drawing



Material

Clamping plates	non-corrosive stainless steel
Bolts	non-corrosive stainless steel
Washers	non-corrosive stainless steel
Nuts	Torque Control Nut KRASO® DKM
Seal	EPDM 50° +/-5° Shore

Technical details

- Torque Control Nut KRASO® DKM: integrated torque limiter – no torque wrench required
- according to FHRK basis for inspection GE 101 tested
- Radon tight IAF tested – meets the requirements for Radon areas according FHRK information sheet MB 101
- Axial bending of the media pipes up to 8° possible
- MPA gas- and water pressure tight, tested up to 10,0 bar

certificate	find in our download area
-------------	---

TECHNICAL DATA SHEET



KRASO® Sealing Insert Type TD-X

Size - 80

K	80	80	80		
M	25	32	43		
L	80	80	80		
Clamping range	20-26	29-35	38-44		
Weight	0,75	0,67	0,54		
Item no.	KDI080TDX022	KDI080TDX032	KDI080TDX040		

Size - 100

K	100	100	100	100	
M	32	43	50	63	
L	40	40	40	40	
Clamping range	29-35	38-44	45-51	58-64	
Weight	0,8	0,77	0,77	0,76	
Item no.	KDI100TDX032	KDI100TDX040	KDI100TDX048	KDI100TDX060	

Size - 125

K	125	125	125		
M	63	75	80		
L	40	40	40		
Clamping range	58-64	72-78	75-81		
Weight	1,2	1,1	1,1		
Item no.	KDI125TDX060	KDI125TDX075	KDI125TDX078		

Size - 150

K	150	150	150	150	
M	75	80	90	110	
L	40	40	40	40	
Clamping range	70-76	75-81	85-91	105-111	
Weight		1,06	1,22	1,22	
Item no.	KDI150TDX075	KDI150TDX078	KDI150TDX088	KDI150TDX108	

Size - 200

K	200	200	200	200	200	200
M	110	114	125	135	140	160
L	40	40	40	40	40	40
Clamping range	105-111	113-119	120-126	130-136	135-141	155-161
Weight	2,8	2,8	2,7	2,0	1,9	1,4
Item no.	KDI200TDX108	KDI200TDX114	KDI200TDX123	KDI200TDX133	KDI200TDX139	KDI200TDX158

•K | core hole (mm) •M | media lines (mm) •L | seal (mm) •weight | in kg

Dimensional and weight data without guarantee • Variations in colour possible between the illustrated product and the product supplied • Technical subject to afternoon • All rights to the drawings and designs are the property of KRASO GmbH Co. KG • The copying and distribution of drawings and other use requires our written consent.

TECHNICAL DATA SHEET



KRASO® Sealing Insert Type TD-X

Size - 250

K	250	250	250	250	250
M	160	170	180	200	210
L	40	40	40	40	40
Clamping range	156-162	165-171	176-182	196-202	206-212
Weight					
Item no.	KDI250TDX158	KDI250TDX168	KDI250TDX177	KDI250TDX200	KDI250TDX210

Size - 300

K	300	300	300	300	300
M	200	210	219	225	250
L	40	40	40	40	40
Clamping range	196-202	206-212	215-221	221-227	246-252
Weight					
Item no.	KDI300TDX200	KDI300TDX210	KDI300TDX219	KDI300TDX225	KDI300TDX250

Size - 350

K	350	350	350	350	350
M	200	210	219	225	250
L	40	40	40	40	40
Clamping range	196-202	206-212	215-221	221-227	246-252
Weight					
Item no.	KDI350TDX200	KDI350TDX210	KDI350TDX219	KDI350TDX225	KDI350TDX250

Size - 400

K	400	400	400	400	
M	273	280	315	326	
L	40	40	40	40	
Clamping range	269-275	276-282	311-317	322-328	
Weight					
Item no.	KDI400TDX273	KDI400TDX280	KDI400TDX315	KDI400TDX326	

Size - 500

K	500	500	500		
M	400	429	450		
L	40	40	40		
Clamping range	297-402	426-431	447-452		
Weight					
Item no.	KDI500TDX400	KDI500TDX429	KDI500TDX450		

•K | core hole (mm) •M | media lines (mm) •L | seal (mm) •weight | in kg

Dimensional and weight data without guarantee • Variations in colour possible between the illustrated product and the product supplied • Technical subject to afternoon • All rights to the drawings and designs are the property of KRASO GmbH Co. KG • The copying and distribution of drawings and other use requires our written consent.